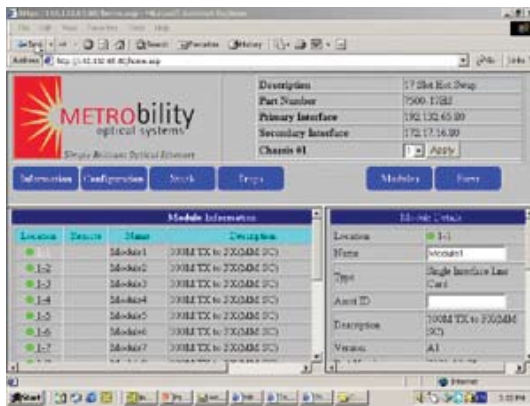


WebBeacon™

Web-based Element Management System

Superior Browser-based Network Management



WebBeacon™ Element Management System (EMS) by Telco Systems is a browser-based element and service provisioning software for Metrobility® devices. Enabled through an embedded kernel which resides on the management card, WebBeacon provides an efficient, user-friendly way to configure and manage all Metrobility chassis installed on a single network. The network administrator can use WebBeacon as an alternative to the CLI typically used to configure and operate network devices.

Using WebBeacon, network managers can access individual managed devices remotely, adjust operating parameters quickly and even

switch hardware settings from any location at any time. All platform configuration updates, maintenance, and diagnostics can be performed remotely through a web browser. User-enabled traps based on extensive real-time MIB-II and Metrobility-specific MIB statistics — including alarm thresholds and notification procedures — enable early problem identification, fast fault isolation and proactive management to prevent problems before they affect end users.

WebBeacon supports complete remote monitoring and control for all of Metrobility devices when configured in a chassis with a management line card. ■

Product Highlights

- ❖ Comprehensive monitoring and control for proactive management
- ❖ Embedded in the Metrobility management line card
- ❖ Supports the complete line of Metrobility services line cards and interface line cards
- ❖ Detailed views of:
 - System information
 - Chassis monitoring
 - Management module monitoring
 - Console logs
 - Trap log
- ❖ Interface fields for:
 - Device configuration
 - Module configuration
 - Trap configuration

Chassis Details

Stack Location	1
Description	17 Slot Chassis 1P
Name	Aggr-1
Number of DC Slots	17
Number of DC Slots	2
Manufacture Date	03/20/03
Version Number	A
Agent ID	
Physical Name	Chassis
Part Number	30396-1182
Serial Number	12345
Uptime	46 days 17:40:22.17
Average Temperature	30°F (1°C)
Module 0 (Maxtemp)	30°F (1°C)
Module 1 (Maxtemp)	30°F (1°C)

Module Details

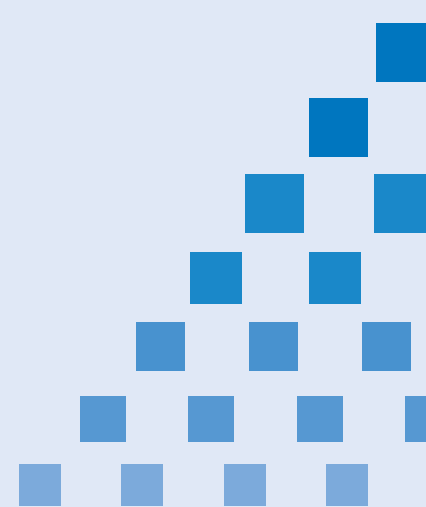
Location	1-1
Name	Aggr-1
Type	Access Line Card
Agent ID	
Description	100M TX to 100M DC
Version	A
Part Number	8231-14
Serial Number	000001100
Manufacture Date	00/00/01
Module Type	Module
Temperature Status	Good
Operation of Fans	2
Operation of Slots	1
Uptime	46 days 17:50:00.00
Link Layer Config	Disabled
Time Synced	Enabled
32K Parameters	2
32K Parameters	2
32K Parameters	1
Temperature	30°F (1°C)
Current	30°F (1°C)
Minmax	30°F (1°C)

Network Statistics

IP	MTU	Address	Type	State	Uptime	Down	Queue
1	1500	192.168.0.20	E	UP	1718056	0	0
2	1500	192.168.1.17	E	UP	0	0	0
3	1500	192.168.0.1	E	UP	0	0	0

Trap Log

IP	Time	Device	Description
1	10/10/2003 11:24:11	192.168.0.20	Abstract Port Link Status Change
2	10/10/2003 11:24:11	192.168.0.20	Abstract Port Link Status Change
3	10/10/2003 11:24:11	192.168.0.20	Abstract Port Link Status Change
4	10/10/2003 11:24:11	192.168.0.20	Abstract Port Link Status Change
5	10/10/2003 11:24:11	192.168.0.20	Abstract Port Link Status Change
6	10/10/2003 11:24:11	192.168.0.20	Abstract Port Link Status Change
7	10/10/2003 11:24:11	192.168.0.20	Abstract Port Link Status Change
8	10/10/2003 11:24:11	192.168.0.20	Abstract Port Link Status Change
9	10/10/2003 11:24:11	192.168.0.20	Abstract Port Link Status Change
10	10/10/2003 11:24:11	192.168.0.20	Abstract Port Link Status Change



WebBeacon Features and Statistical information

Chassis Information

Part Number
Serial Number
Date of Manufacture
Revision
Description

Model	Serial	Year	Type	Chassis	Slots	Max Slots	Min Slots
R5000	00000000000000000000	00	00000000000000000000	00000000000000000000	0000	0000	0000

Chassis Status

Power Status
Power Output Voltage
Platform Temperature
Platform Reset

Item	Value
Power	Power On
Temp	40.00000000
Output Voltage	3.300
Reset	00000000000000000000

Port Information

Auto-negotiation status
Name
Type
Speed
Duplex mode

Port	Name	Type	Speed	Duplex	Auto-negotiation
Port_1	10/100BaseTX	10/100	10000	Full	Enabled
Port_2	10/100BaseTX	10/100	10000	Full	Enabled
Port_3	10/100BaseTX	10/100	10000	Full	Enabled
Port_4	10/100BaseTX	10/100	10000	Full	Enabled

Port Status

Link stats
Link activity

Alarms

Cold Start
Warm Start
Link Up
Link Down
Platform Reset
Line Card Reset
Port Reset
Authentication Failure
Configuration Change
Temp Out-of-Range
Power Supply Out-of-Range
Optical Power (Access Line Card)
Power Supply On/Off
Module/Power Supply Inserted
Module/Power Supply Removed
Redundant Switchover
Far End Fault
Remote Fault Alarm (Ethernet and TDM)
Port Speed Change
Port Link State Change (Ethernet and SONET)

Date	Time	Severity	Message
20040302	01:24:18	Warning	Warning: Port Link State Change
20040302	01:24:18	Warning	Warning: Port Link State Change
20040302	01:24:18	Warning	Warning: Port Link State Change

Active Control

Network Select/Dynamic Recovery Modes
Link Loss Carry Forward
Link Loss Return
Auto Revert to Primary, Transmit on Both, Link on Both
SONAR
Port/Line Card Name
Chassis Name, Location and Contact Information
IP Address
Reset Platform
Subnet Mask
Default Gateway
Port State
Auto-Negotiation
Loopback
Backpressure,
Speed
Duplex
Alarm Threshold Setting
Telnet to Console Commands

Port	Name	Subnet Mask	Default Gateway
Port_1	10/100BaseTX	255.255.255.0	192.168.1.1
Port_2	10/100BaseTX	255.255.255.0	192.168.1.1
Port_3	10/100BaseTX	255.255.255.0	192.168.1.1
Port_4	10/100BaseTX	255.255.255.0	192.168.1.1

Ordering Information

WebBeacon

Part Number Description

WebBeacon is embedded in Metrobility's Management Line Card

R502-M Management Card (One DB-15 and two RJ-45 connectors)

R104-11 10/100TX 4-port Chassis Stacking Line Card (Four RJ-45 connectors)

Hardware requirements

The management card requires one slot in the following Metrobility chassis:

R5000-17HS 17-slot chassis, rack-mountable

R1000-xxx 2-slot chassis, rack-mountable

R400-02HS-1A 2-slot chassis

Features and Benefits

- Proactive network management from any supported network browser, such as Internet Explorer or Netscape
- Comprehensive monitoring and control for proactive management

